
REPEATED ITEM LIBRARY MANAGER



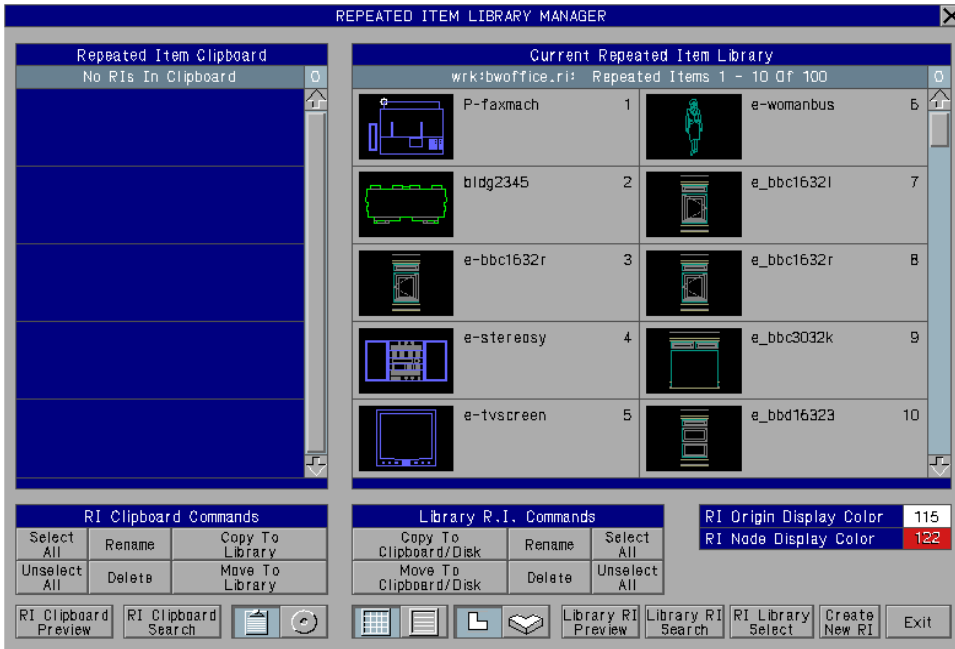
Repeated Item Libraries are special files where *Repeated Items* are stored. It is an archive file which contains the Repeated Items, and any associated *Attributes*.

The *Repeated Item Library Manager* provides tools for creating, renaming, and deleting Repeated Items within the current library, and also provides a Library Manager Clipboard which may be used to store Repeated Items, and move them from one library to another. Any associated Attributes are moved or deleted along with the Repeated Item. Repeated Items may also be archived to and extracted from libraries directly from/to the disk. The Repeated Item Library Manager also provides tools which allow you to load and unload Repeated Item libraries, select the current library. It may also be used to create, rename, and delete Repeated Item libraries. Refer to the [Repeated Items](#) topic for more information about Repeated Items and Libraries.

While a Repeated Item library may be loaded from anywhere on your system, they are generally found in one of four places - The current *Project* directory, the *Standards* directory, **ARRIS** Plug-in libraries, and **ARRIS** system libraries. A Repeated Item library uses the *.ri* extension.

The **ARRIS** and **ARRIS** Plug-In Repeated Item libraries are distributed with **ARRIS** and the individual Plug-Ins. They may not be altered using this program. The Repeated Item libraries found in *Standard* and *Project* directories are user created and defined. There may be as many Standard and/or Project RI libraries as you wish.

The *Repeated Item Library Manager* may be accessed by selecting the [Library Mgr.](#) button located under the [Create](#) heading on the **Repeated Items** Application Sub-menu. The **REPEATED ITEM LIBRARY MANAGER** pop-up menu will appear on the screen.



General Commands

The **REPEATED ITEM LIBRARY MANAGER** menu is divided into two main sections. The left portion is devoted to the Repeated Item Library Manager Clipboard / Disk List, and the center and right portion is devoted to the current Repeated Item Library. The Repeated Items within the current RI library, Clipboard, and Disk List are shown in alphabetical order by RI name. The Manager functions for the RI Library and Clipboard/Disk are found grouped below the Library and Clipboard/Disk displays. General functions are found at the bottom of the menu.

Menu List Selections

Repeated Items on the Current RI Library list, the RI Clipboard list, and the RI Disk list, and *RI Libraries* on the RI Library Select list in the menus are selected or made current by selecting the box in which they are displayed. The current *Library*, *Clipboard*, or *Disk RI* or *Library Select RI Library* is highlighted in the menu. A Repeated Item which is displayed in Preview mode from either the Current RI Library or RI Clipboard list is considered selected. In some cases, selecting the current (highlighted) Library, Clipboard or Disk RI, or RI Library Select list Library, or a right-click selection on these lists will perform a separate function. These are described with the function they perform.

If the displayed Repeated Item has *attributes* associated with it, a blue Attributes indication will be displayed in the menu box along with the RI and /or RI name.

Slidebars

The menu slidebars contained within the **REPEATED ITEM LIBRARY MANAGER** Menus allow the user to quickly browse through the lists Repeated Items or RI Libraries when the list is longer than the menu available to display it. These slidebars are located on the menu on the right side of the list for which they function. A sidebar consists of an up arrow at the top, a down arrow at the bottom and a sidebar in between. The sidebar shows the proportion of, and relative location within the entire list of the portion of the list currently displayed in the menu. Refer to the [Slidebars](#) topic for more information. Sidebar commands are as follows:

UP ARROW: A left click selection on the [Up Arrow](#) moves the display of the list up 1 item. A right click selection on the [Up Arrow](#) moves the display of the list up 1 menu page.

DOWN ARROW: A left click selection on the [Down Arrow](#) moves the display of the list down 1 item. A right click selection on the [Down Arrow](#) moves the display of the list down 1 menu page.

SLIDEBAR: Selecting on the [Sliderbar](#) moves the portion of the list displayed in the menu to the relative position of the selection on the sidebar.

General Commands

The general commands found at the bottom right portion of the **REPEATED ITEM CATALOG MANAGER** menu perform overall tasks which relate to all-portions of the program.

EXIT: Exits the *Repeated Item Library Manager* and clears the menu from the screen.

Note 1: Selecting the **REPEATED ITEM LIBRARY MANAGER** menu title bar or the "X" icon at the right end of the title bar will also exit the RI Library Manager.

CREATE NEW RI: This function duplicates the [Create RI](#) function on the **Repeated Items** Application Sub-menu. When this button is selected, **ARRIS** will prompt for the new Repeated Item name. Enter the name as desired. Remember that the name is limited to 12 alpha-numeric (plus underscore) characters with no spaces. The **Repeated Item Library Manager**

menu will clear from the screen and the command will prompt for the first and second fence points of an area on the screen which contains the new Repeated Item. **ARRIS** will then prompt for the Repeated Item origin. The **Repeated Item Library Manager** menu will return to the screen and the new Repeated Item will be added to the current RI library, and shown on the *Repeated Item Library Manager* list. Refer to the [Repeated Items](#) topic for further description of creating a Repeated Item.

Note 1: The entities which will be contained within the new Repeated Item must be already drawn and on a searchable layer(s) when the [Create New RI](#) function within the *Repeated Item Library Manager* is invoked.

RI LIBRARY SELECT: Selecting this button toggles the *Repeated Item Library Manager* to *RI Library Select* mode. This allows you to select a new Repeated Item Library as current, or to access one of the library management functions. Refer to the *Library Select* portion of this topic below.

Repeated Item Sample Views

Plan View



Displays all Repeated Items in display boxes in the **REPEATED ITEM LIBRARY MANAGER** menus in plan view. The display of all repeated items currently shown in the *Repeated Item Library Manager* is updated when this box is selected.

Iso View



Displays all Repeated Items in display boxes in the **REPEATED ITEM LIBRARY MANAGER** menus in isometric view. This function is particularly useful with 3 dimensional repeated items. The display of all repeated items currently shown in the *Repeated Item Library Manager* is updated when this box is selected.

Repeated Item Display Mode

Icon Mode



Displays the contents of the current Repeated Item library and clipboard showing the repeated item graphics, and the names. The current library Repeated Items are shown on the menu 10 at a time with a sidebar, and the Clipboard Repeated Items are shown on the menu 5 at a time with a sidebar.

List Mode



Displays the contents of the current Repeated

Item library and clipboard showing the Repeated Item names only. The current library Repeated Items are shown on the menu 36 at a time with a slide-bar, and the Clipboard Repeated Items are shown on the menu 18 at a time with a sidebar.

Repeated Item Clipboard / Disk Mode

Repeated Item Library Manager Clipboard



Toggles the left side of the **REPEATED ITEM LIBRARY MANAGER** menu to *RI Library Manager Clipboard* mode. The menu displays the contents of the RI clipboard showing the Repeated Item graphics and names 5 at a time with a sidebar in *Icon* mode, or RI names only 18 at a time with a sidebar in *List* mode. Refer to the [RI Library Manager Clipboard](#) portion of this topic below.

Repeated Item Library Manager Disk List



Toggles the left side of the **REPEATED ITEM LIBRARY MANAGER** menu to *Disk* mode. This displays un-archived Repeated Item files (RI's which are not archived in a library) in the currently selected disk directory location. The un-archived Repeated Items are shown on the menu by name only, 18 at a time with a sidebar. Refer to the [RI Library Manager Disk List](#) portion of this topic below.

Repeated Item Node/Origin Display

RI Origin Display Color

Displays the color used to display the RI origin marker in the Library Repeated Item and Clipboard icon and Preview displays. The RI origin location is displayed with a rectangle in the set color. On the Library RI and Clipboard lists, the origin is displayed only if an Origin marker was added and saved to the Repeated Item using the Edit RI menu. In the Library RI and Clipboard Preview menus, the RI origin location is displayed with a color rectangle whether an origin marker has been added to the RI or not. Refer to the [Repeated Items](#) topic for more information on origin markers. The desired display color may be set by selecting the color box.

RI Node Display Color

Displays the color used to display *Nodes* within the RI in the Library Repeated Item and Clipboard icon and Preview displays. The RI node locations are displayed with an X in the set color. Refer to the [Repeated Items](#)

topic for more information on nodes. The desired display color may be set by selecting the color box.

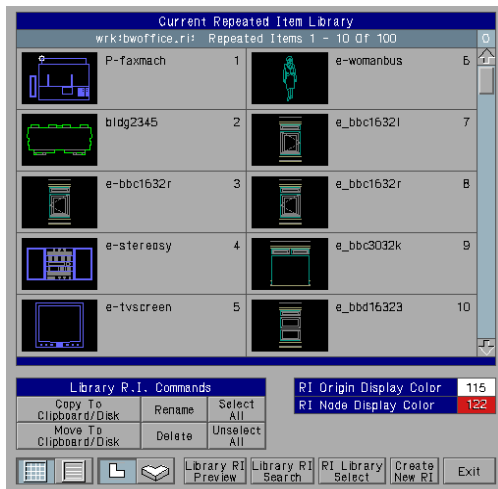
Permissions

ARRIS system and Plug-In RI libraries may not be saved or altered. If the current Repeated Item library is an **ARRIS** system or Plug-In library, the buttons which edit the library or any Repeated Items within it are blanked out and not active.

Current Repeated Item Library

Repeated Item Library

The current Repeated Item library name is displayed at the top of the Library Repeated Item list. If this button is selected, the **REPEATED ITEM LIBRARY MANAGER** Menu toggles to Library selection mode and the **RI Library Select** list is displayed. Refer to the *Library Select* portion of this topic below. This box also displays the range of Repeated Items within the library displayed on the menu below, and the total number of Repeated Items in the library.



The highlighted box containing a number to the right of the current Repeated Item Library name indicates the number of items within the current RI library that are selected. This is particularly useful in *Icon* display mode if the current RI library contains more than 10 Repeated Items, or in *List* display mode if the current RI library contains more than 36 Repeated Items since in these cases not all Repeated Items in the library are shown on the menu at one time. A library Repeated Item may be selected, even if it is not in the portion of the library displayed on the menu.

Library RI Commands

SELECT ALL: Selects and highlights all Repeated Items in the Current

Repeated Item Library list.

UNSELECT ALL: Unselects and unhighlights all Repeated Items in the Current Repeated Item Library list.

RENAME: Renames the currently selected Library Repeated Item. A single current library RI must be selected first. The user is prompted for the new Repeated Item name. Any attributes associated with a renamed Repeated Item will remain associated with that item.

Note 1: This box is blank if permissions are denied on the current Repeated Item library. See the *Permissions* discussion in this topic.

DELETE: Deletes the currently selected library Repeated Item(s). At least one current library RI must be selected first. **ARRIS** will prompt to verify the deletion. All selected Repeated Items will be deleted from the current RI library. Any attributes associated with a Repeated Item will be deleted along with the RI.

Note 1: This box is blank if permissions are denied on the current Repeated Item library. See the *Permissions* discussion in this topic.

Note 2: *WARNING!* Deleting a Repeated Item from a library has far reaching consequences. If the Repeated Item has been placed in a drawing and no Repeated Item of that name is found in an available RI library, any action which touches the display list of the drawing will cause the display of that Repeated Item to disappear, even though the entity itself remains in the database. The deletion of a Repeated Item should be well thought out and not taken lightly.

COPY TO CLIPBOARD / DISK: Copies the currently selected library Repeated Item(s) from the current RI library to either the RI Library Manager Clipboard, or to the currently set Disk location, depending on the current Clipboard/Disk mode. At least one current library RI must be selected first. The selected Repeated Items are copied and thus not removed from the current Repeated Item library. Any attributes associated with a Repeated Item will be copied along with the RI.

Note 1: This box is blank if permissions are denied on the current Repeated Item library. See the *Permissions* discussion in this topic.

MOVE TO CLIPBOARD / DISK: Moves the currently selected library Repeated Item(s) from the current RI library to either the RI Library Manager Clipboard, or to the currently set Disk location, depending on the current Clipboard/Disk mode. At least one current library RI must be selected first. Any attributes associated with a Repeated Item will be moved along

with the RI.

Note 1: This box is blank if permissions are denied on the current Repeated Item library. See the *Permissions* discussion in this topic.

LIBRARY RI SEARCH: This function allows you to search the current Repeated Item library for a particular RI by name. This is especially useful for determining if a given RI name is used in the library, or to move the display to a particular RI within a large library. **ARRIS** will prompt for the Repeated Item name to search. Type the RI name and enter. If an RI by the given name is contained within the current library, the current RI Library display will scroll to show the given RI and it will be selected and highlighted on the menu. If no RI within the current library has the given name, **ARRIS** will give a "Not Found" message.

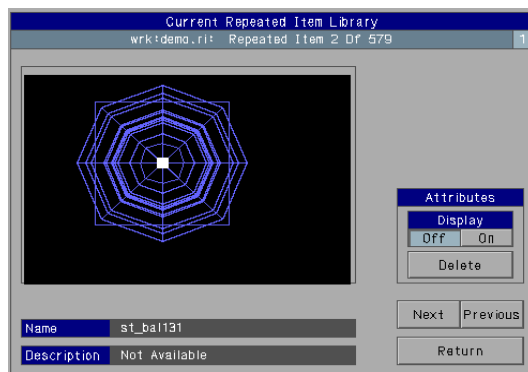
LIBRARY RI PREVIEW: Displays the currently selected library Repeated Item in the **LIBRARY RI PREVIEW** sub-menu on the right side of the **REPEATED ITEM LIBRARY MANAGER** menu. Refer to the *Library RI Preview* portion of this topic below. This button remains highlighted while in Library RI Preview mode. Selection of this button when in Preview mode will toggle the display back to the Current Library RI list.

Note 1: A single Repeated Item must be selected (highlighted) in order to preview.

Note 2: A right click selection of a Repeated Item on the Current Library RI list will unselect any selected Repeated Items on the list, Select the RI picked, and toggle to *Library RI Preview* mode.

Library RI Preview

In *Library RI Preview* mode, the one currently selected library RI is displayed in a large box on the right portion of the **REPEATED ITEM LIBRARY MANAGER** menu. The name of the RI is displayed below the graphic. If the Repeated Item has *Attributes* and the Attribute Display is on, the attributes are displayed as well.



The description box below the Name display is for future use. Descriptions are not currently available directly on the Repeated Item, although a description may be assigned to a Repeated Item when it is listed in a Catalog.

NEXT: Displays the next Repeated Item in the current Repeated Item library list in Preview mode. From the last RI in the library, the display will cycle to the first RI in the library.

PREVIOUS: Displays the previous Repeated Item in the current Repeated Item library list in Preview mode. From the first RI in the library, the display will cycle to the last RI in the library.

RETURN: Returns the Repeated Item Library Manager current RI Library display from Preview mode to the full current library RI list. Selection within the Repeated Item menu display itself will also execute this function.

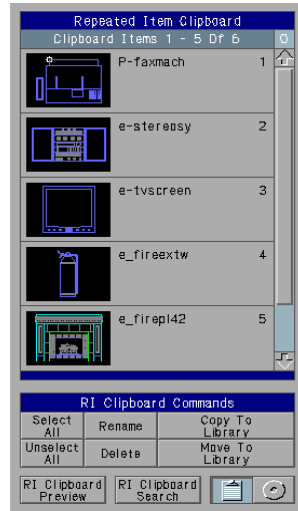
ATTRIBUTE DISPLAY OFF: When Attribute Display is Off, any displayable attributes associated with the previewed Repeated Item are not displayed in the Library RI Preview menu.

ATTRIBUTE DISPLAY ON: When Attribute Display is On, any displayable attributes associated with the previewed Repeated Item will also be displayed in the Library RI Preview menu along with the RI.

ATTRIBUTE DELETE: If the previewed Repeated Item has attributes, selecting this button will delete them. **ARRIS** will prompt to verify the deletion.

RI Library Manager Clipboard

The Repeated Item Library Manager Clipboard is used as a temporary holding point while moving Repeated Items from one library to another, or as a "reservoir" for storage of Repeated Items not currently in use. Note that the Repeated Item Library Manager Clipboard is a feature completely contained within the *Repeated Item Library Manager* and is not tied in to either the **ARRIS** Clipboard feature (used for cutting & pasting drawing data), the Repeated Item Catalog Manager Clipboard, or the MS Windows Clipboard.



The Repeated Item Library Manager Clipboard is actually a special Repeated Item library "clipboard.ri" which is stored in the user home directory. This library is automatically loaded and unloaded as needed for function of the clipboard. It is not intended to be generally available as a Repeated Item library in **ARRIS**. Because it is stored in the user home directory, the RI clipboard will be unique for each login user, and will have network availability depending on the availability of the user home directory.

Clipboard RI Commands

SELECT ALL: Selects and highlights all Repeated Items in the RI Clipboard list.

UNSELECT ALL: Unselects and unhighlights all Repeated Items in the RI Clipboard list.

RENAME: Renames the currently selected Clipboard Repeated Item. A single clipboard RI must be selected first. The user is prompted for the new Repeated Item name. Any attributes associated with a renamed Repeated Item will remain associated with that item.

DELETE: Deletes the currently selected clipboard Repeated Item(s). At least one clipboard RI must be selected first. **ARRIS** will prompt to verify the deletion. All selected Repeated Items will be deleted from the RI Library Manager clipboard. Any attributes associated with a Repeated Item will be deleted along with the RI.

COPY TO LIBRARY: Copies the currently selected Repeated Item(s) from the RI clipboard to the current Repeated Item library. At least one clipboard

RI must be selected first. The selected Repeated Items are copied and thus not removed from the Repeated Item Library Manager clipboard. Any attributes associated with a Repeated Item will be copied along with the RI.

Note 1: This box is blank if permissions are denied on the current Repeated Item library. See the *Permissions* discussion in this topic.

MOVE TO LIBRARY: Moves the currently selected Repeated Item(s) from the RI clipboard to the current Repeated Item library. At least one clipboard RI must be selected first. Any attributes associated with a Repeated Item will be moved along with the RI.

Note 1: This box is blank if permissions are denied on the current Repeated Item library. See the *Permissions* discussion in this topic.

RI CLIPBOARD SEARCH: This function allows you to search the Repeated Item Library Manager Clipboard for a particular RI by name. This is especially useful for determining if a given RI name is contained in the clipboard, or to move the display to a particular RI if there are a lot of RIs stored in the clipboard. **ARRIS** will prompt for the Repeated Item name to search. Type the RI name and enter. If an RI by the given name is contained within the RI clipboard, the RI Library Manager Clipboard display will scroll to show the given RI and it will be selected and highlighted on the menu. If no RI within the RI clipboard has the given name, **ARRIS** will give a "Not Found" message.

CLIPBOARD RI PREVIEW: Displays the currently selected Clipboard Repeated Item in the **CLIPBOARD RI PREVIEW** sub-menu on the left side of the **REPEATED ITEM LIBRARY MANAGER** menu. Refer to the *Clipboard RI Preview* portion of this topic below. This button remains highlighted while in Clipboard RI Preview mode. Selection of this button when in Preview mode will toggle the display back to the full RI clipboard list.

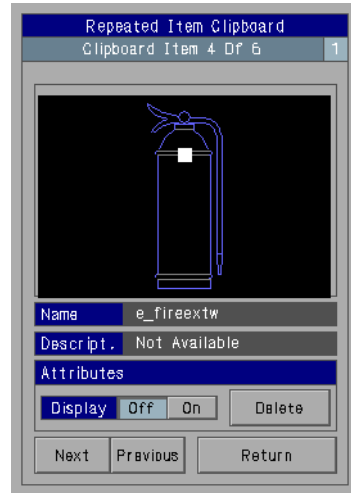
Note 1: A single Repeated Item must be selected (highlighted) in order to preview.

Note 2: A right click selection of a Repeated Item on the RI clipboard list will unselect any selected Repeated Items on the list, Select the RI picked, and toggle to *Clipboard RI Preview* mode.

Clipboard RI Preview

In *Clipboard RI Preview* mode, the one currently selected clipboard RI is displayed in a large box on the left portion of the **REPEATED ITEM LIBRARY MANAGER** menu. The name of the RI is displayed below the graphic. If the Repeated Item has *Attributes* and the Attribute Display is on, the attributes are displayed as well.

The description box below the Name display is for future use. Descriptions are not currently available directly on the Repeated Item, although a description may be assigned to a Repeated Item when it is listed in a Catalog.



NEXT: Displays the next Repeated Item in the Repeated Item Clipboard list in Preview mode. From the last RI in the clipboard, the display will cycle to the first RI in the clipboard.

PREVIOUS: Displays the previous Repeated Item in the Repeated Item Clipboard list in Preview mode. From the first RI in the clipboard, the display will cycle to the last RI in the clipboard.

RETURN: Returns the Repeated Item Library Manager RI Clipboard display from Preview mode to the full RI clipboard list. Selection within the Repeated Item menu display itself will also execute this function.

ATTRIBUTE DISPLAY OFF: When Attribute Display is Off, any displayable attributes associated with the previewed Repeated Item are not displayed in the Clipboard RI Preview menu.

ATTRIBUTE DISPLAY ON: When Attribute Display is On, any displayable attributes associated with the previewed Repeated Item will also be displayed in the Clipboard RI Preview menu along with the RI.

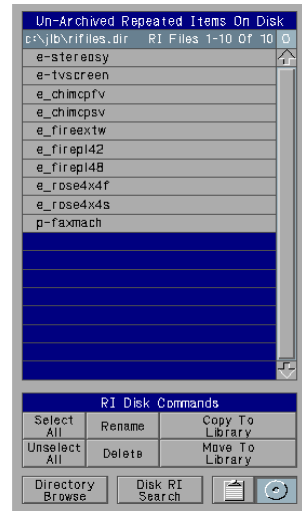
ATTRIBUTE DELETE: If the previewed Repeated Item has attributes, selecting this button will delete them. **ARRIS** will prompt to verify the deletion.

RI Library Manager Disk List

The *Repeated Item Library Manager Disk List* displays un-archived Repeated Item (and attribute) files within a specified directory on your computer. These Repeated Item files are the individual Repeated Items which have been extracted from a Repeated Item library. The extracted RI files have a .ri_ extension.

The current disk list location is displayed on the menu at the top of the list. Selection of this box allows you to browse for the current disk list directory. See the [Directory Browse](#) command discussion below!

Note 1: Repeated Items which are not archived in an RI library are not usable in **ARRIS**. They may not be displayed, selected, placed in a drawing, or otherwise addressed. The ability to archive and unarchive individual Repeated Items is provided in the Repeated Item Library Manager as a way to be able to move a Repeated Item from one library to another, or to store unused Repeated Items.



RI Disk List Commands

SELECT ALL: Selects and highlights all Repeated Items in the RI Disk list.

UNSELECT ALL: Unselects and unhighlights all Repeated Items in the RI Disk list.

RENAME: Renames the currently selected Disk Repeated Item. A single disk RI must be selected first. The user is prompted for the new Repeated Item name. Any extracted attribute file in the same disk directory which contains the same base name as the RI will also be renamed, thus attributes associated with a renamed Repeated Item will remain associated with that item.

DELETE: Deletes the currently selected disk Repeated Item file(s). At least one clipboard RI must be selected first. **ARRIS** will prompt to verify the deletion. All selected Repeated Items will be deleted from the Disk List directory. Any attributes associated with a Repeated Item will be deleted along with the RI.

COPY TO LIBRARY: Copies (or archives) the currently selected Repeated Item(s) from the disk to the current Repeated Item library. At least one disk list RI must be selected first. The selected Repeated Items are archived to the

current RI library and the un-archived RI file(s) will remain in the directory. Any attributes associated with a Repeated Item will also be archived along with the RI.

Note 1: This box is blank if permissions are denied on the current Repeated Item library. See the *Permissions* discussion in this topic.

MOVE TO LIBRARY: Moves (or archives) the currently selected Repeated Item(s) from the disk to the current Repeated Item library. At least one clipboard RI must be selected first. The selected Repeated Items are archived to the current RI library and the un-archived RI file(s) will be removed from the directory. Any attributes associated with a Repeated Item will also be archived and deleted from the directory along with the RI.

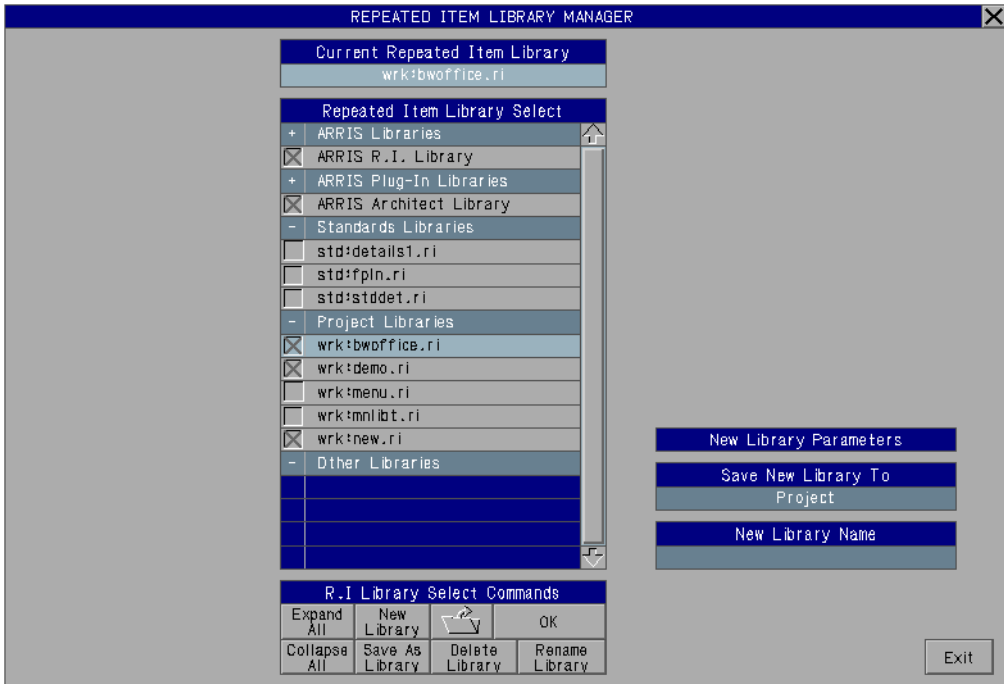
Note 1: This box is blank if permissions are denied on the current Repeated Item library. See the *Permissions* discussion in this topic.

DISK RI SEARCH: This function allows you to search the Repeated Item Library Manager current disk directory for a particular RI by name. This is especially useful for determining if a given RI name is contained in the directory, or to move the display to a particular RI if there are a lot of RIs stored in the directory. **ARRIS** will prompt for the Repeated Item name to search. Type the RI name and enter. If an un-archived RI by the given name is contained in the current disk RI directory, the RI Library Manager Disk List display will scroll to show the given RI and it will be selected and highlighted on the menu. If no RI within the directory has the given name, **ARRIS** will give a "Not Found" message.

DIRECTORY BROWSE: allows you to set the directory in the computer file system which is displayed for un-archived Repeated Items on the disk. Selecting this button brings up the **ARRIS** browse pop-up menu with which you can navigate to the desired directory. The current Disk List directory location is displayed at the top of the **Un-Archived Repeated Items On Disk** menu.

Library Select

When the RI Library Select button or the current Repeated Item Library name display is selected, the *Repeated Item Library Manager* toggles to *Library Select* mode and the *Library Select* functions are displayed in the **Repeated Item Library Manager** menu.



The *current* Repeated Item Library is selected by left clicking on the box in which the desired library is displayed. Selecting one of the 4 location titles will expand or collapse the list of RI libraries shown under that title.

New Library Parameters

The *New Library Parameter* settings are shown on the right side of the **REPEATED ITEM LIBRARY MANAGER** menu. These settings are used when creating new or renaming existing Repeated Item libraries.

SAVE NEW LIBRARY TO: Repeated Item Libraries may be saved to either the Standards (std:) or Current Project directories. The current setting is displayed in this box. Select the box to toggle between the two settings.

NEW LIBRARY NAME: Select this box to enter a name for a new Repeated Item library. RI libraries must end in a .ri suffix. The New Library Name must be set before using the New Library, Save As Library, or Rename Library functions.

R I Library Select Commands

These commands allow you to create new RI libraries, rename or delete

existing RI libraries, or select a Repeated Item library as current.

EXPAND ALL: Expands all standard RI library locations on the RI Library Select list. All available RI libraries are now viewable on the list.

COLLAPSE ALL: Collapses all standard RI library locations on the RI Library Select list. Only the RI library location titles and the **ARRIS** RI Library, Architect RI Library, and current RI library are now viewable on the list.

NEW LIBRARY: Creates a new RI library using the name set in the New Library Name box, placed in either the *Standard* or *Project* directory as shown in the Save New Library To box. A new library name must be specified in the New Library Name box before this function is executed. The new RI library will display in the appropriate location on the RI Library Select list in the center portion of the **REPEATED ITEM LIBRARY MANAGER** Menu and be highlighted and set as the current RI library.

LIBRARY BROWSE: Selecting this button brings up a browse pop-up menu which allows you to find and select as current, a Repeated Item library which is not located in one of the standard locations (Current Project, Standards, Loaded Plug-In, or **ARRIS**). The newly loaded library will appear on the RI Library Select list at the bottom under the Other heading. As an example, this allows you to find and load an RI library which is in a project directory other than the current project.

OK: Toggles the **REPEATED ITEM LIBRARY MANAGER** back to the current RI library display. The highlighted RI library on the RI Library Select list is the current library and the contents of this library will be displayed on the menu. Selecting the highlighted current library on the list will toggle the menu as if the OK button were selected.

DELETE LIBRARY: Deletes the currently selected *Standard* or *Project* Repeated Item library on the RI Library Select list in the center portion of the **REPEATED ITEM LIBRARY MANAGER** Menu from the disk. **ARRIS** will prompt to verify the deletion. The **ARRIS** RI Library will be set as current after the selected library is deleted. **ARRIS** System and Plug-In RI libraries may not be deleted.

RENAME LIBRARY: Renames the currently selected *Standard* or *Project* Repeated Item library on the RI Library Select list in the center portion of the **REPEATED ITEM LIBRARY MANAGER** Menu. The library is renamed to the name set in the New Library Name box, and is placed in the *Standard*

or *Project* directory as shown in the Save New Library To box. If the Save New Library To setting is different than the current location of the library, it will be moved as it is renamed. A new library name must be specified in the New Library Name box, and a library must be selected in the RI Library Select list before this function is executed. **ARRIS** System and Plug-In RI libraries may not be renamed.

See Also

[Repeated Items, Catalogs, Repeated Item Catalog Manager, Slidebars, & Clipboard.](#)