

Introducing the New Oracle-based Materials Utility for BuildersCAD

Now there is an easier way to create and maintain your Materials Application Tables: the Stock Table (Stock File); Estimating Formula Table and the Template Table. BCAD Services is happy to introduce the Materials Utility that runs on top of an Oracle Database, including the 10g Express Database available as a free download at <http://www.oracle.com/technology/products/database/xe/index.html>.

This utility brings the powerful create and edit tools of Oracle to BuildersCAD Materials setup and maintenance. After installation, you access with Database Utility through the Microsoft Internet Explorer.

The Stock File

In Figure 1, below, you see the main page of the Stock Items tab. You can do a "keyword" search for a stock item by typing in a portion of an Item Number or Item Description (underlined in red) and then hitting the Search button.

The screenshot shows a web browser window titled "Stock Items Report - Microsoft Internet Explorer". The address bar shows the URL: <http://127.0.0.1:8080/apex/?p=101:1:2097677886445923>. The page has a navigation bar with tabs for "Stock Items", "Estimating Formulas", and "Templates". The "Stock Items" tab is active. Below the navigation bar, there are two main sections: "Stock Search" and "Edit Stock".

The "Stock Search" section contains a search form with the following fields and controls:

- Category: - All - (dropdown)
- Subcategory: - All - (dropdown)
- Item Number: - All - (text input, underlined in red)
- Description: - All - (text input, underlined in red)
- Search (button)
- Clear Item Number (button)
- Clear Description (button)

The "Edit Stock" section contains a list of links:

- Stock Item Search
- Stock Item Entry Form
- Stock Multi Row Edit Form
- Stock Items List

Below the search form is the "Edit Stock Items" section, which includes a "NEW" button and a table of stock items. The table has the following columns: Item Number, Category, Subcategory, Description, and Used By. The table lists 10 items, with the last one being "row(s) 1 - 10 of 1140".

Item Number	Category	Subcategory	Description	Used By
020402	02 SITE WORK	PERMIT	BLDG PERMIT	EA
030001	03 CONCRETE	FOUNDATION	BASEMENT SLAB L&M	SQF
030002	03 CONCRETE	FOUNDATION	READY MIX CONCRETE	CUFT
030003	03 CONCRETE	FOUNDATION	6 MIL POLY	SQF
030004	03 CONCRETE	FOUNDATION	FOOTINGS 16" -LABOR	LFT
030005	03 CONCRETE	FOUNDATION	FOOTINGS 24" -LABOR	LFT
030006	03 CONCRETE	FOUNDATION	SLAB LABOR	SQF
030008	03 CONCRETE	FOUNDATION	#4 REINFORCING BAR	LFT
030009	03 CONCRETE	FOUNDATION	6X6 #10 WWF	SQF
030010	03 CONCRETE	WALL CONCRETE	12" FOUNDATION WALL	LFT

Figure 1

In Figure 2, below, you see the Multi-Row Edit form where you can use the standard Windows cut and paste feature to cut/paste text when editing existing stock or when adding new Stock Items.

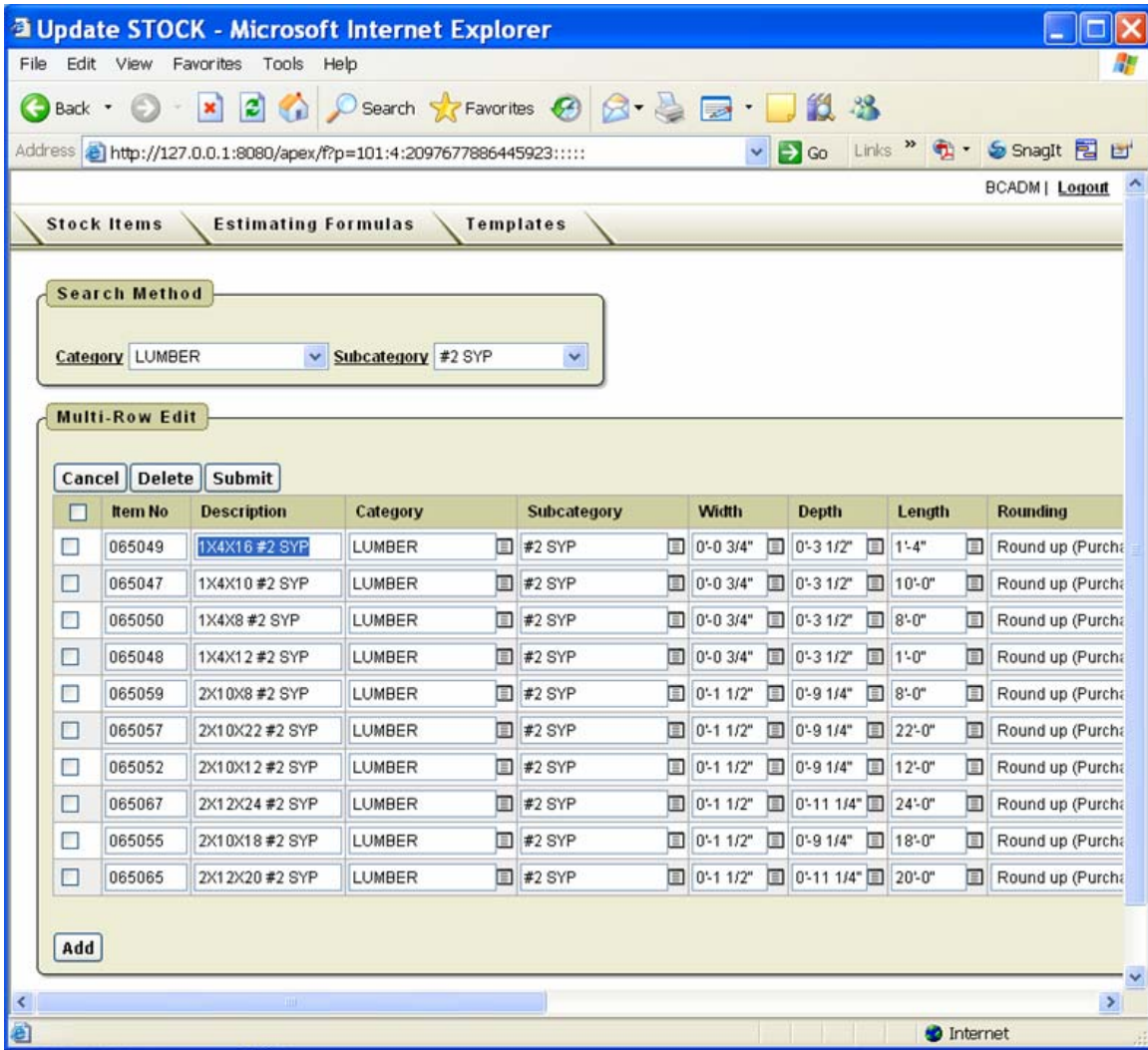


Figure 2

Estimating Formulas

To locate an Estimating Formula, go to the Estimating Formulas tab and select a Group and then a Sub-Group (underlined in red in Figure 3) and then the Formula Name you want to review.

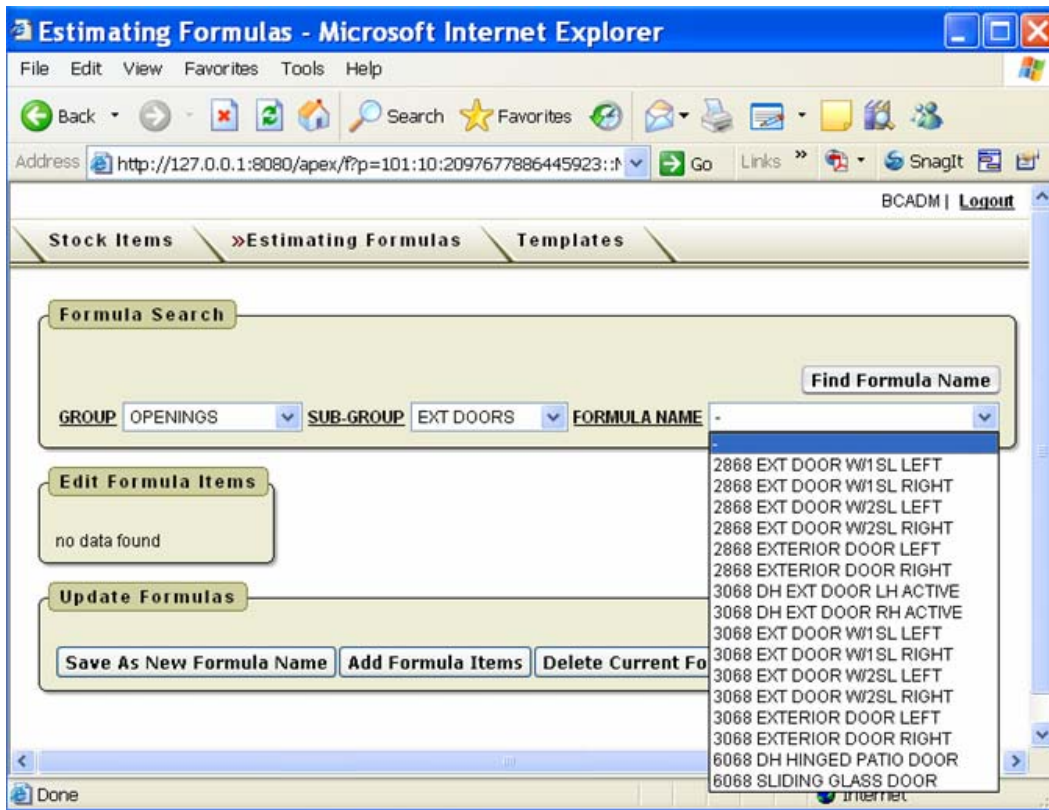


Figure 3

There is also a “keyword” search available for Estimating Formulas. Select the Find Formula Name button to go to the Find Formula Name page (shown in figure 4). To search for a formula, type in a portion of the Estimating Formula Name in the box next to Find Partial Name, and hit Enter. A list of formulas containing the search string in any portion of the Formula Name will appear. In Figure 4, we keyed in “brick” and hit the Search button.

With the Oracle-based utility Stock Items, Estimating Formulas and Templates are always active. So you can toggle back and forth between them. In other words you can add a Stock Item, then toggle over and write and Estimating Formula and then toggle over and build a Template, moving back and forth between the tables.

With all three tables, you can do a Save As to create new Stock Items, Estimating Formula and Templates from existing ones.

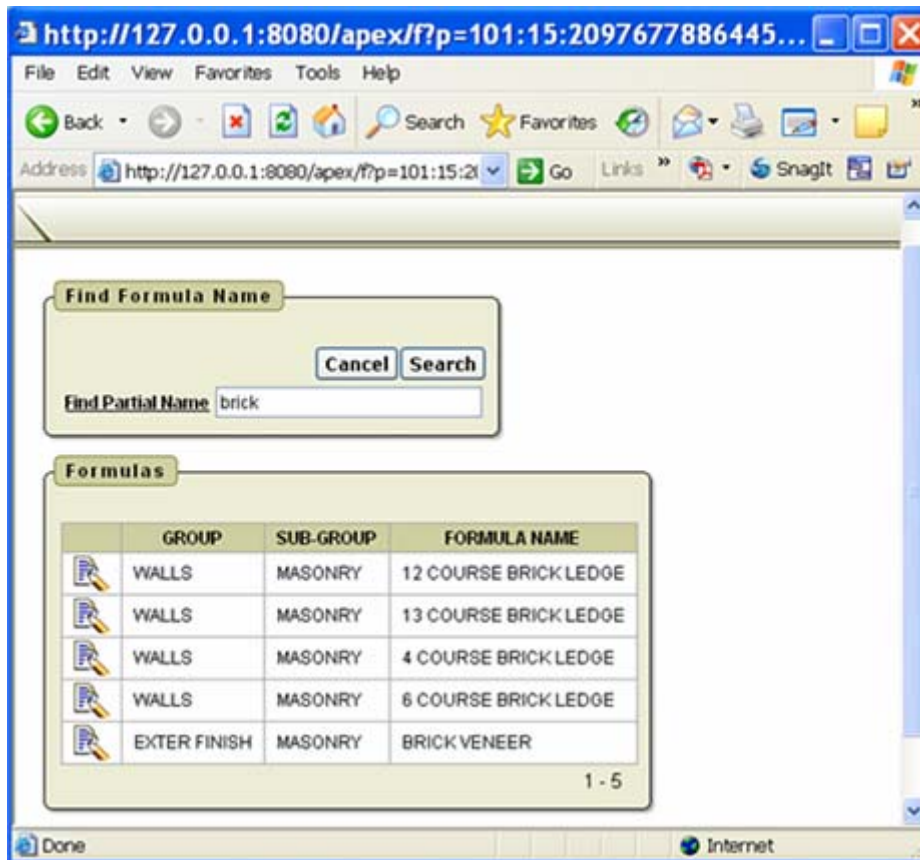


Figure 4

Templates

The Template tab is similar to the Estimating Formula tab. You select a Template Name and Template Type (underlined in red in Figure 5) to see a list of the Estimating Formulas assigned to a specific Template Type.

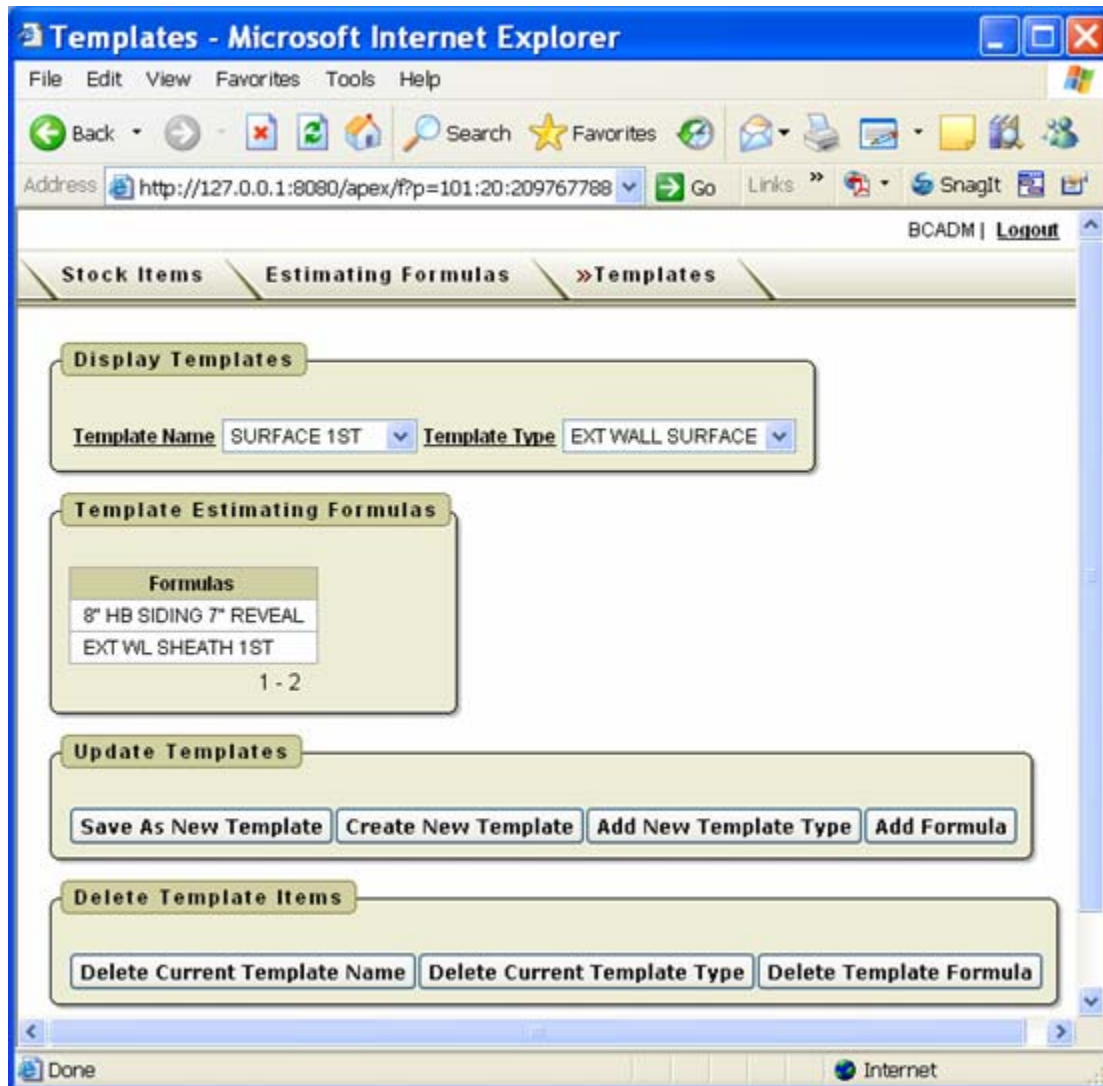


Figure 5

After you done creating or editing Stock Items, Estimating Formulas and/or Templates, you can move them back into BuildersCAD by selecting on the Oracle Import/Export button located at the bottom of the Materials Application main menu, shown in Figure 6.

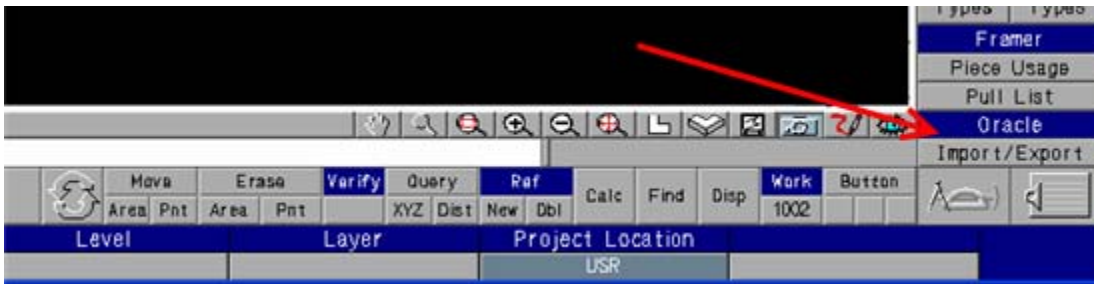


Figure 6

While working in BuildersCAD, if you make changes through the BCAD Materials Application, you can move the Stock File, Estimating Formulas or Templates back to Oracle by using the Oracle Export option. Remember that an export of the existing Stock File, Estimating Formulas or Templates from BCAD will overwrite what is existing in the Oracle database.

With the Oracle Import/Export button, you can have both BuildersCAD and the Oracle utility open at the same time, make changes in either interface, and on-the-fly move your material setups from BCAD to Oracle (or the reverse).

Help

If you move the cursor over any of the menu labels that are bold and underlined, a question mark will appear with the cursor, as shown in Figure 7. This indicates that Help is available with this label. Pick on the label with the left mouse button to display the pop-up help information.

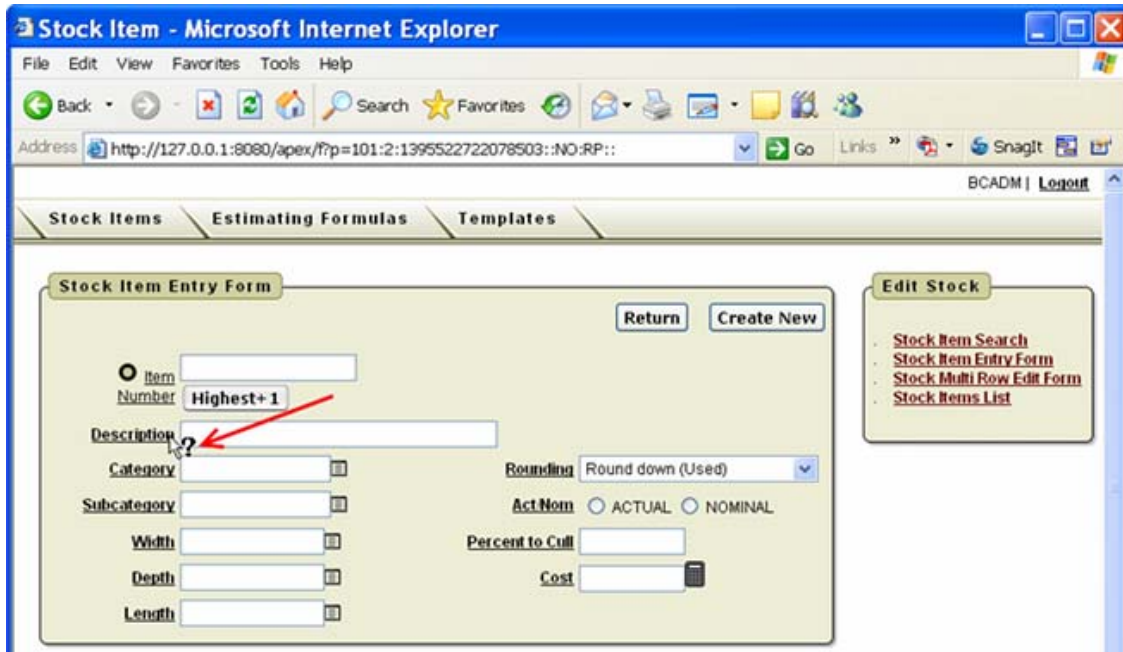


Figure 7