

PROJECT PAGE LIST MANAGER



The Project Page List Manager allows the user to create and manage a *Project Page List* - a list of Architectural Drawing Set pages for each project on their system. This list is used when opening a *drawing* or *sheet* in **ARRIS** to select the current project page desired in a user-friendly way, without having to browse the computer file system for the various files needed. Project Pages are presented on the **OPEN** menus in familiar terms including the *Page Number* and a user assigned *Page Name*, instead of cryptic computer folder (directory) & file names. The *Project Page List* is subdivided into one or more categories. The information saved about each project page on the list is as follows:

- Number - Most architecture firms identify pages of the drawing set using a numbering system. This field is a completely user defined text string and may be any combination of alphanumeric characters. It is designed to be relatively short. Example "A1" or "A1.2".
- Name - This field is an alphanumeric text string and is designed to be a more verbose name for the page of the drawing set. Example: "First Floor Plan".
- Database - This field is a database name within the project directory. Example: "plans.db"
- Drawing / Sheet File - This field is either a drawing or sheet file within the database named above. Example: "a01.dr" or "_a01.sht".

For each Project Page, either a drawing or a sheet may be specified. In the Page selection process in the **OPEN** Menus, there is the option to see pages of only drawings, of only sheets, or of both. The Database + Drawing/Sheet file defined in the Project Page List for a given page is what will be opened when a page is selected during the page selection process in the **OPEN** Menu. See the [Open](#) topic for more information.

The project page list file is called "*pagelist.tx*" and is saved in the *arrisdat.dir* sub-directory under the project (wrk:) directory.

The Project Page List Manager is found in the **PROJECT/DATABASE TOOLS** menu which is found by selecting [Tools](#) on the **FILE** Pull Down menu.

APPLY: Applies any changes made to the Project Page List and writes it to disk. No changes are saved until this button is selected. If changes have been made to the Project Page List, the "Apply" text in this button appears yellow, warning that there are unsaved changes. If write permission is denied on the catalog (see the Permissions section below), the "Apply" text in this button will appear red, indicating that changes are not allowed.

PROJECT LIST MGR: Opens the Project List in the Project List Manager. Refer to the [Project List Manager](#) topic.

DETAILS: Displays the currently selected Project Page entry in the **PROJECT PAGE DATA** sub-menu on the right side of the **PROJECT PAGE LIST MANAGER** menu. Refer to the *Project Page Data* section below.

Menu List Selections

Categories on the Categories list and *Project Pages* on the Project Page List in the menus are selected or made current by selecting the box in which they are displayed. The current *Category* and *Project Page* are highlighted in the menu. A Project Page which is displayed in *Detail* mode on the menu is the current list Project Page. In some cases, selecting the current highlighted *Category* or *Project Page*, or a right click selection on these lists will perform a separate function. These are described with the function they perform.

Note 1: The reference to the "Current Project Page" in this topic refers to the entry on the *Project Page List* which is currently selected or highlighted. This is not necessarily the current project page within **ARRIS** defined as the currently loaded database/drawing or database/sheet.

Slidebars

The menu slidebars contained within the **PROJECT PAGE LIST MANAGER** Menu allow the user to quickly browse through lists of Categories and Project Pages when the list is longer than the menu available to display it. These slidebars are located on the menu on the right side of the list for which they function. A sidebar consists of an up arrow at the top, a down arrow at the bottom, and a sidebar in between. The sidebar shows the proportion of, and relative location within the entire list of the portion of the list currently displayed in the menu. Refer to the [Slidebars](#) topic for more information. Sidebar commands are as follows:

UP ARROW: A left click selection on the [Up Arrow](#) moves the display of the list up 1 item. A right click selection on the [Up Arrow](#) moves the display of the list up 1 menu page.

DOWN ARROW: A left click selection on the Down Arrow moves the display of the list down 1 item. A right click selection on the Down Arrow moves the display of the list down 1 menu page.

SLIDEBAR: Selecting on the Slidebar moves the portion of the list displayed in the menu to the relative position of the selection on the sidebar.

Permissions

Access to add, change, or delete Project Pages on the Project Page List can be limited to specific users. When the "Apply" button is selected, the program checks the `arrisd.dat.dir` directory under the project directory of the project for which the Project Page List is open for a text file named `"pagelist_rw.txt"`. If it exists, the file is read and the users found within are compared to the current computer login user. If the current user is on the list, permission is granted and the `"pagelist.tx"` is saved. If the user is not on the list, an error message "Project Page List Permission Denied" is displayed and the list is not saved. If the file does not exist, permissions are open to everyone. The file is a simple ascii text file with one user per line which can be created with any text editor.

Category Commands

ADD: Adds a category to the Project Page List. The user is prompted for the location on the Categories List to add the category. The new category is inserted in front of the category selected. Pressing the <cr> or <Enter> key, or selecting a position on the menu Categories List display beyond the end of the list will add the new category to the end of the list. **ARRIS** will then prompt for the new category name.

DELETE: Deletes the currently selected Category from the Project Page List. A Category must be selected first. All project page references listed within the category are also deleted.

Note 1: This command deletes the reference to the Project Pages on the Project Page list only. It does not affect the project directory itself, any databases, drawings or sheets, or any graphic data.

RENAME: Renames the currently selected Category. A Category must be selected first. The user is prompted for the new Category name.

MOVE: Moves the currently selected Category from one location on the list to another. A Category must be selected first. The user is prompted for the new location. The selected Category is inserted at the new location in front of the category shown in the box selected. If a position beyond the end of the list is

selected, or if the <cr> or <Enter> key is pressed at the New Location prompt, the Category is moved to the end of the list. All Project Pages on the list contained within the category are moved on the list with the Category.

Project Page Commands

ADD: Adds a project page to the Project Page List. The user is prompted for the location on the list to add the project page. The new project page is inserted in front of the project page contained on the line selected. A <cr> or <Enter> at this prompt, or selecting a line beyond the end of the Project Page List will add the Project Page entry to the end of the list. When the Project Page entry is added, the **Project Page List Manager** will toggle to Detail mode. Refer to the *Project Page Data* section below. From here the specific data relating to the Project Page Entry must be added. The Project Page Number, and the Project Page Name will be prompted for automatically when a new Project Page entry is added.

DELETE: Deletes the currently selected project page entry from the Project Page List. A project page entry must be selected first.

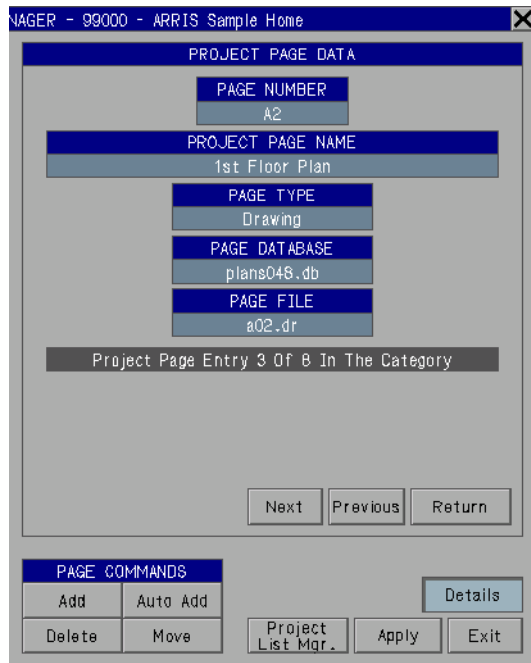
Note 1: This command deletes the reference to the Project Page on the Project Page list only. It does not affect the project directory itself, any databases, drawings, or sheets, or any graphic data.

AUTO ADD: The Auto Add function searches the *Project Directory* of the project of the currently open Project Page List for all *Drawings* and *Sheets* contained in all *Databases* within the project. Auto Add then compares the list of drawings and sheets found to the Project Page List and drops any which are already referenced in a Project Page entry. Auto Add also filters out any *master.dr* or *_sht.sht* files from it's list. The remaining drawings / sheets are then added to the Project Page List in a new Category called "New Project Pages". The newly added project entries are now ready to be edited for page number and name, and may be moved to other appropriate Categories that you may have set up. If the "New Project Pages" category already exists, the new Project Pages are added to it. If it does not exist, it is automatically created. This function allows multiple new database/drawings and database/sheets which have been created on the disk to be very quickly referenced and added to the Project Page List as Project Pages.

MOVE: Moves the currently selected Project Page entry from one location on the Project Page List to another. A Project Page entry must be selected first. The user is prompted for the new location. The Project Page entry is inserted at the new location in front of the Project Page shown in the box selected. A <cr> or <Enter> at this prompt, or selecting a line beyond the end of the Project Page List will move the Project Page entry to the end of the list.

Project Page Data

When the [Details](#) button is selected, the right side of the **PROJECT PAGE LIST MANAGER** Menu toggles to the **PROJECT PAGE DATA** sub-menu and more detailed data on the current Project Page entry is displayed. This menu may also be reached by a right click selection on a Project Page entry on the Project Page List.



Current Project Page Commands

PAGE NUMBER: Selection of this box allows the user to edit the Project Page Number for this Project Page entry. The Project Page Number is simple user defined text, and although there is no limit to the number of characters which may be used, it is designed to be relatively short.

PROJECT PAGE NAME: Selection of this box allows the user to change the Project Page Name of the currently selected Project Page entry. The Project Page Name is simple user defined text. There is no specific limit to the number of characters which may be used.

PAGE TYPE: This box displays the file type of the drawing or sheet file referenced by this Project Page entry. Selecting the box toggles the file type between *Drawing* and *Sheet*. Note that as the file type is changed, the file extension of the [Page File](#) shown below changes. The Page Type is initially determined by the file extension of the [Page File](#) as it is saved in the Project Page List.

PAGE DATABASE: This box displays the *Database* which contains the *Drawing* or *Sheet* file referenced by the current Project Page entry. Selecting

this box allows the user to set the database name. **ARRIS** will prompt for the database name. Selecting the "Browse" option allows the user to select the database desired from a menu. If the Page Database name box is red, this indicates the database shown in the box does not exist on the disk. This is possible as some firms may use a standard page list for projects which contains the reference for the project page, but the database for the page has not yet been created.

PAGE FILE: This box displays the Drawing or Sheet file referenced by the current project page entry. Selection of this box allows the user to set this file name. **ARRIS** will prompt for the file name. Selecting the "Browse" option allows the user to select the drawing or sheet file desired from menus. The Page File Type and Page Database should be set first, before the Page File is set, allowing the "Browse" feature to search the correct database for the correct file type. If the Page File name box is red, this indicates the drawing or sheet file shown in the box does not exist on the disk. This is possible as some firms may use a standard page list for projects which contains the reference for the project page, but the drawing or sheet file for the page has not yet been created.

RETURN: Returns the menu display on the right side of the **PROJECT PAGE LIST MANAGER** Menu to the Project Page Number/Name list.

NEXT: Displays the *Next* Project Page Entry in the current Category in Detail Mode. From the last Project Page entry in the Category, the display will cycle to the first Project Page entry in the current Category.

PREVIOUS: Displays the *Previous* Project Page Entry in the current Category in Detail Mode. From the first Project Page entry in the Category, the display will cycle to the last Project Page entry in the current Category.

See Also

[Project Directory](#), [Open](#), [Slidebars](#), and [Project List Manager](#).